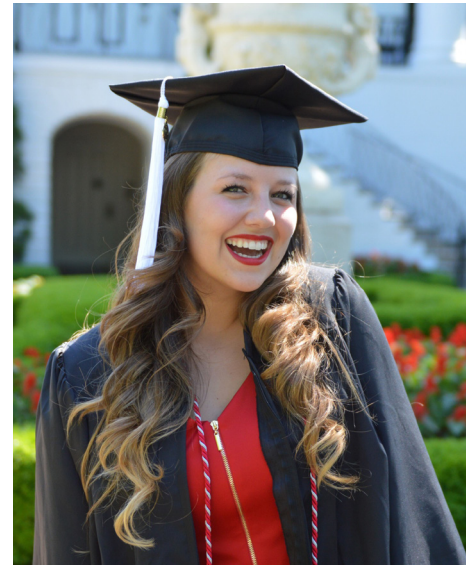


For more information on room details, please visit <http://housing.ua.edu/halls/bryant/>



ABOUT ME



- Born and raised in Sweet Home Alabama and I am undeniably southern, y'all.
- I graduated from UA with a B.A. in History and Theatre.
- I am the first generation of my family to attend and graduate college!
- My favorite area of study is the Civil Rights Movement and how it influences modern America.
- This will be my 5th year working for UA Housing!

I look forward to your arrival and a great year! Roll Tide!

Dear Resident:

Welcome to The University of Alabama! Good choice! We are excited about your arrival, and are ready to help you on your way to becoming an integral part of the UA community.

When you arrive on campus, you will meet your Resident Advisor, who will help you as an advocate, an information source and an advisor as you navigate the UA environment. The HRC staff has been carefully selected, thoroughly trained, and are incredibly enthusiastic about enhancing your Alabama experience. Your growth is our central concern, and we have designed progressive programs for enriching the culture of your residential life. Immerse yourself in the opportunity and become involved in activities within the Bryant community this fall.

Bryant is 51% Engineering and 49% Athletics, but 100% awesome. Bryant Dining, the best food on campus, is just out our back door. There is never a dull moment around here, especially in the fall. Programming efforts are centered on engineering events and sporting events.

By now, you should have selected a Move-In date and time through the Move-In website. If you do not select a time, one will be assigned to you. You will receive additional move-in information via Crimson email later this month, including driving and parking instructions and a map to direct you to your residence hall.



Division of Student Life
Housing and
Residential Communities

Hannah Niblett
Community Director

Your Area Coordinator:
Kelsey Hansen
Office Location: Burke West
(205) 348-6719
kkhansen@ua.edu



UAHousing

(205) 348-6676
housing.ua.edu

BED INFORMATION

Your bed is an extra-long full, so XL full bedding will be necessary. Your bed will adjust to a height of 33 inches. Students do not generally loft the bed in these rooms.

SUITE KITCHENS

The kitchenette is equipped with a sink, microwave and full-size refrigerator to be shared with your suitemates. There will not be a stove or oven in your suite.

Bringing a small cleaning kit for your suite will be useful as you care for your space throughout the year.

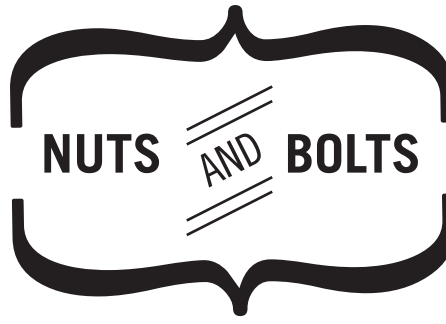


FURNITURE

The furniture that is provided by HRC must stay in the room. Any additional furniture that you choose to bring in must not present a safety hazard, i.e. blocking doors. Please note that any upholstered furniture or other items you choose to bring into your room must be made of fire-resistant upholstery. Fire ratings for acceptable furniture will be shown on tags attached to the item, in accordance with the Flammability Requirements of California Bureau of Home Furnishings Technical Bulletin 117 (a tag on the upholstery will display if this piece is compliant with these standards).

BATHROOM

Your suite has its own bathroom(s), one for each 2 residents. You will be responsible for cleaning it and therefore you will need to bring cleaning supplies and your own toilet paper.



Here's a list of things you'll want to know in preparation for Move-In this fall.

No pets are allowed in the residence halls. Owners of unapproved animals are subject to conduct hearings and fines.

Blinds are installed in each room; however any curtains are the sole responsibility of the resident and are only acceptable with tension rods that do not damage the window framing or walls.

Bryant Hall features a lock that allows you to use your Action Card to gain access to the building and as the key to your suite. Individual room keys will be used for bedroom access.

You may only use nails or push pins to hang items on walls (please limit 4 holes per room to avoid repair charges).

APPLIANCES

HRC does not permit open-flame appliances or appliances where the food comes into direct contact with the heat source. Students are encouraged to utilize appliances with an automatic shut-off feature in their space.

If you have specific appliance questions, please email housing@ua.edu.

LAUNDRY

Laundry rooms are available on the 2nd and 4th floors.

We recommend you use high efficiency (HE) laundry detergent, which will help ensure that your clothes are properly rinsed during the washing cycles. You also don't need as much detergent per load as with traditional detergent.

CABLE AND INTERNET

Your community will have a wireless internet connection, but you may want to bring an Ethernet cord as well. If you plan on bringing a smart TV, printer, or gaming system, please plan on connecting it with a cable, instead of the shared wireless connection.

The living room in your suite has a television installed. This is the only TV allowed to be wall-mounted.

Cable service is already connected in your room. Please remember to bring a coaxial cable for each television you are planning to hook up. **DO NOT** plan to mount a television on the wall, as this is not permitted in any residence halls.

OTHER ROOM INFORMATION

Your floor is carpeted, so you may decide not to bring an area rug.

Your building is single-gender, so please check with the building staff regarding guest and/or visitation policies for the opposite gender.

Move-In

For more information on getting ready for Move-In, check out our website with tips and packing lists.

You will receive additional move-in information via Crimson email later this summer, including driving and parking instructions and a map to direct you to your residence hall.

Email us questions at moveinhelp@ua.edu.



Division of Student Life
Housing and
Residential Communities



UAHousing

(205) 348-6676
housing.ua.edu/movein